

Technical rider HOME

collective Mime Wave

build up time	2 hours
collective	1 actress, 1 technician
transport	van, 4.8m long, 2m high, 1.95m wide

technicians needed from theater	1
duration of show	40 min + 10 min after play
ballet floor	yes
minimus size playing field	5m wide, 6m deep, 3.5m high
collective takes with them	beamer, screen, speakers, led strip + laptop to control this equipment
size of screen	4.3m wide, 3.3m high

SOUND

- We use our own speakers.
 - In case of a large venue, we can choose to send 2 line signals to the theater PA.
- For this our monitors both have a balanced XLR-output.

LIGHT

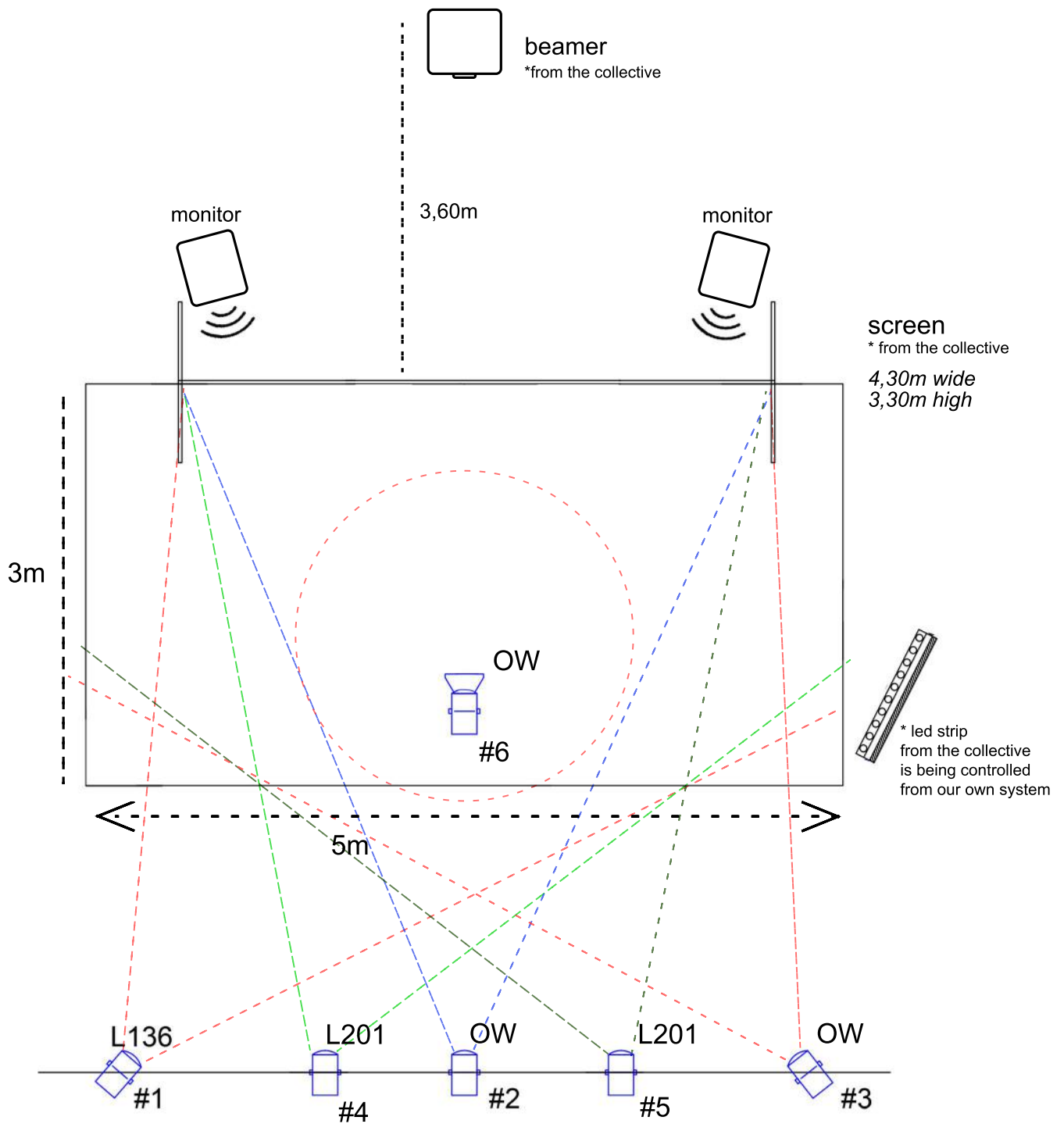
- Technician of the house will run the show. With some explanation it is simple.

* Our screen is transparant and the beamer projects from the back.

No light can fall on the screen from the back.

But from the front, light can fall fully on the screen.

contact production	Anastasiia Liubchenko mimewave@gmail.com +31 6 443 56 942
contact technique	Thijs Felperlaan thijs@mimewave.com +31 6 46 012 678
contact booking agency	Vanaf2 info@vanaf2.nl



	lamp	direction
front white	# 1 1 KW PC	crossing from left to right
	# 2 1 KW PC	central
	# 3 1 KW PC	crossing from right to left
front blue	# 4 1 KW PC	crossing middle left to right
	# 5 1 KW PC	crossing middle right to left
	# 6 1 KW PC	around 75 degrees away from audience
audience light		stays on during the whole show, dimmed

* Our screen is transparant from the back, from where the beamers projects. No light can fall on the back of the screen.

* From the front light can shine fully on the screen. But as most as possible, not on the black edges of the screen. They can reflect distractingly

setting	cue	fade-time	audience	#1	#2	#3	#4	#5	#6
0.5	audience walk in - actress already present on stage	-	80	90	80	80			
1	start show - actress says 'we will start'	7s	40	90	80	80			40
2	furniture start floating in the water	7s	40	40	40	40	100	100	
3	beach appears in screen after swimming in the sea	7s	40	90	80	80			40
4	passing the blue stone while walking down the mountain	7s	40	40	40	40	90	90	70
5	goes with pinguin. Transition from night to abstract ice world	7s	40	100	100	100	100	100	70
6	pink drops appears after fire	7s	40	20	20	20			
7	actress arrives from behind the screen after drawing the house	7s	60	90	80	80			70

cue 1
show start



cue 2 / \pm 5th minute
furniture starts floating in the water



cue 3 / \pm 8th minute
beach appears in screen



cue 4 / \pm 19th minute
passing the blue stone, walking down
the mountain



cue 5 / \pm 23rd minute
goes with penguin. Transition from night
to abstract ice world



cue 6 / \pm 28th minute
pink drops appear after fire



cue 7 / \pm 33rd minute
she arrives from behind the screen after drawing the house



HOME
CUELIST