

# technical rider My Colors

traveling by plane

collective Mime Wave

build up time	3 hours
collective	2 people
length of show	40 min + 10 min after play
breaking time	1,5 hours
ballet floor	yes
minimum play area	5m wide - 6m deep - 3m high
contact technique	Thijs Felperlaan thijs@mimewave.com +31 6 46 012 678

traveling by plane	2x odd-sized luggage (each: 150 x 22 x 19 cm / 21kg)
	2x check-in luggage
	2x carry-on luggage

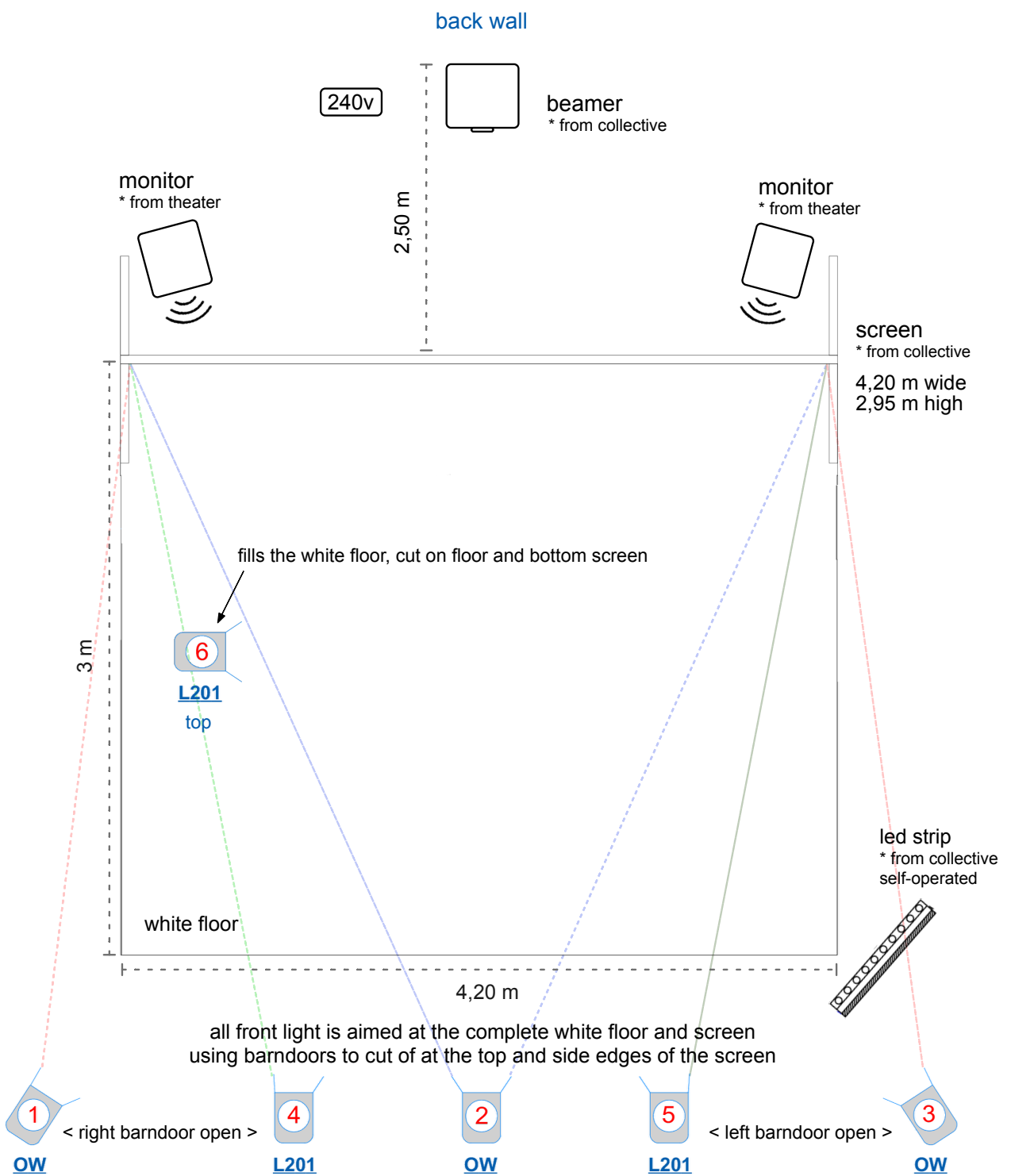
equipment we take with us	beamer, screen, led floor strip
	own laptop with connections to our beamer and led strip

<b>PROVIDED BY THEATER</b>	1 technician (at least)
	2 separate 230v power sources
	2 monitor speakers (12") + XLR cables (5m)
	P.A. system
	Light (see light plan on the next page)

<b>PROJECTION</b>	Our beamer is on stage, behind our screen. connected to our laptop next to it.
-------------------	--

<b>LIGHT</b>	Technician from theater runs the light cues. It is simple with some explanation.
--------------	--

<b>SOUND</b>	We send 4 audio channels (2x stereo) with line level XLR from our laptop to FOH
	<ul style="list-style-type: none"><li>• 2 channels (1x stereo) go to the P.A.</li><li>• 2 channels (1x stereo) go to the monitors on stage behind our screen</li></ul>
	We usually don't need a microphone. If the venue is over 250 seats, please contact us for the possible use of a wireless microphone.



	lamp	direction
front white	# 1 1 KW PC	crossing from left to right
	# 2 1 KW PC	central
	# 3 1 KW PC	crossing from right to left
front blue	# 4 1 KW PC	crossing from mid-left to right
	# 5 1 KW PC	crossing from mid-right to left
top	# 6 1 KW PC	aimed on complete white floor
audience light		stays on dimmed during the show

setting	cue	fade	spots							
			audience	#1	#2	#3	#4	#5	#6	
0.5	walk-in	actrice is already on stage when audience walks in	-	80	80	80	80			
1	start show	after short talk, actrice says 'the show can start'	7s	40	40	40	40	90	90	70
2	living room	fade on screen from purple/yellow world to living room	7s	40	80	80	80			40
3	night	Zaya the puppt says 'orange'	7s	40	40	40	40	90	90	40
4	sleep	mother pulls imaginary chord to turn off lights	0	40				70	70	
5	iceworld	transition through blue tunnel to iceworld	20s	40	100	100	100	100	100	70
6	home	transition through window into a room	7s	40	80	80	80			40
7	black out	Zaya the puppet dissapears in school, screen goes to black	1s	40						
8	applause	actrice stands up to recieve applaus	1s	60	80	80	80			40

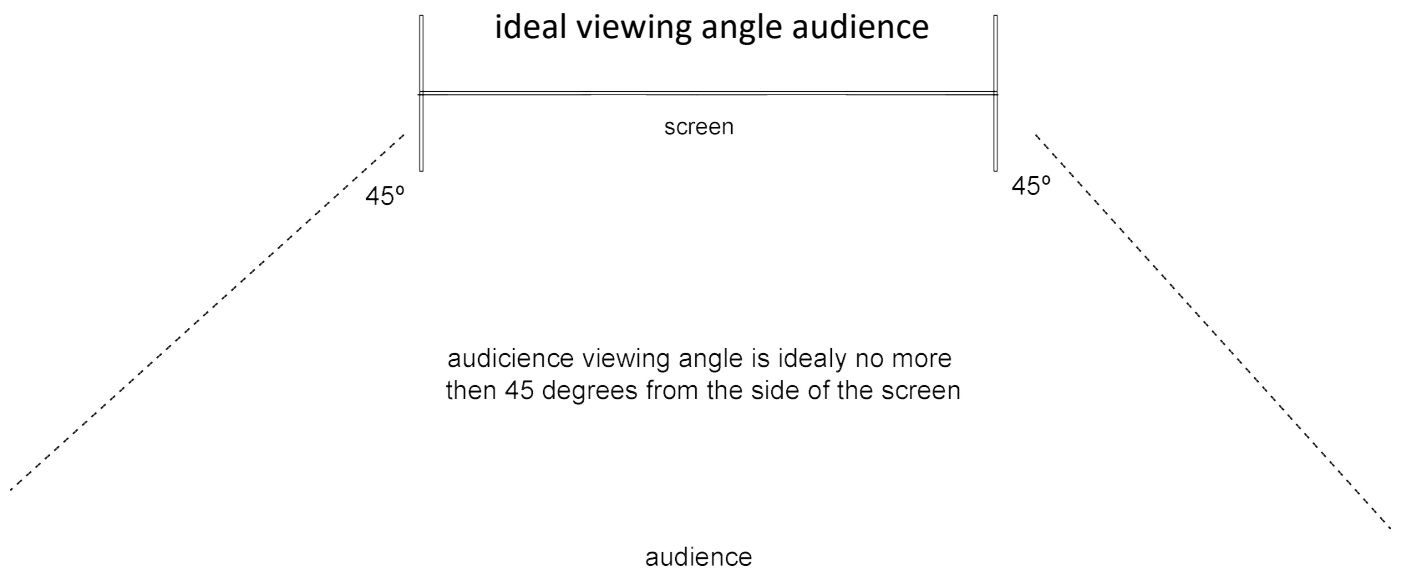
Our screen stands on the stage (no hanging system), with our beamer behind it.



in front



behind



0.5 / doors open  
actrice is allready on stage when audience walks in

cue 1  
after pre-talk, actrice says 'now, we will start'



cue 2 /  $\pm$  2nd minute  
crossfade on screen from world to living room



cue 3 /  $\pm$  25th minute  
orange on puppets arm. puppet says 'orange'



cue 4 /  $\pm$  26th minute  
actrice pulls on imaginary cord to turn of lamp



cue 5 /  $\pm$  30th minute  
transition through blue tunnel



cue 6 /  $\pm$  34th minute  
transition from outside to room through window



cue 7 /  $\pm$  37th minute  
Zaya gaat naar school, projectie fade naar zwart



cue 8 / few seconds after cue 7  
applause

